

# SHIP'S PARTICULARS

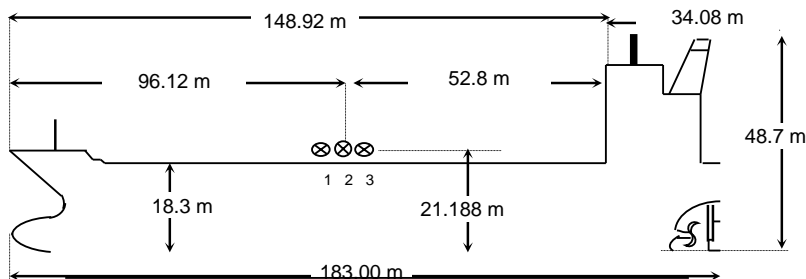
NAME	FPMC 34
CALL SIGN	D5RC7
FLAG	LIBERIA
PORT OF REGISTRY	MONROVIA
OFFICIAL NUMBER	18726
IMO/LLOYDS NUMBER	9845166
CLASS SOCIETY	LR
CLASS NOTATION	LR *100A1 Double Hull Oil and Chemical Tanker, ship type 2, ESP, CSR, LI *IWS SHIPRIGHT (ACS (B), CM) *LMC, UMS, IGS, ECO (BWT, VECS) Descriptive Notes: ShipRight(BWMP(T), SCM, SERS)
P & I CLUB	The Britannia Steam Ship Insurance Association Limited

KEEL LAID	14-Jan-19
LAUNCHED	05-Jun-19
DELIVERED	05-Nov-19
SHIPYARD	Guangzhou Shipyard International Company Limited(GSI)

SATELLITE COMMUNICATION	
V SAT	INM-FBB, INM-C
E-MAIL	formosa.fpmc34@gmail.com
FBB-PHONE	870 773 913 047
FX-PHONE	870 771 309 531
INM SAT-C	463728739 463728740
MMSI	6360 18726
EX. NAMES	N/A
CS / FLAG	N/A

OWNERS	FPMC 34 MARINE CORP.
OPERATORS	Formosa Plastic Marine Corp.

PRINCIPAL DIMENSIONS	
LOA	183.00 m
LBP	179.57 m
BREADTH (Extreme)	32.0 m
DEPTH (moulded)	18.30 m
HEIGHT (maximum)	48.70 m
BRIDGE FRONT - BOW	148.92 m
BRIDGE FRONT - STERN	34.08 m
BRIDGE FRONT - M'FOLD	52.8 m



TONNAGE	REGD	SUEZ	Panama
NET	14960	30728.96	24257
GROSS	28891	26896.65	
GROSS Reduced (R'n:13495)		N/A	

TANK CAPACITIES ( cbm )				
CARGO TANKS (98 %)		F.W Tanks 100%		BLST TKS (100 %)
1Ws	4741.926			FPT(U)&(L) 1580.60
2Ws	5538.372	BOILER W.T	62.7	WBT 1Ws 2247.50
3Ws	8491.896	TCFW TK (P)	435.50	WBT 2Ws 1975.30
4Ws	8644.776	TCFW TK (S)	386.30	WBT 3Ws 2792.30
5Ws	8640.758	C.W.T.	33.30	WBT 4Ws 2741.40
6Ws	5987.016	FW General (P)	124.60	WBT 5Ws 2734.70
7Ws	5577.964	FW General (S)	76.90	WBT 6Ws 2583.10
Slops-P	2286.928	DRINKING W.T.	51.10	WBT 7Ws 2631.30
Slops-S	2551.038			APT Ws 754.30
<b>TOTAL</b>	<b>52460.674</b>	<b>TOTAL</b>	<b>1170.40</b>	<b>TOTAL</b> 20040.50

LOAD LINE INFORMATION	FREEBOARD	DRAFT	DWT
TROPICAL			
SUMMER	5.011	13.300	49,780.80
WINTER			
SEG. BALLAST COND	10.94	7.366	19,563.00
DWT WITH SBT ONLY			
FWA @ Summer draft		284mm	
TPC @ Summer draft		53.80	

OTHER DETAILS			
H. Level Alarm	95%	Independent	MOSASINO
Overfill Alarm	98%		

MACHINERY / PROPELLER / RUDDER	
MAIN ENGINE	MAN B&W ENGINE 6G50MEC9.5 HP SCR
M.C.R.	7585kW @86.1 RPM
N.C.R. (75%)	5689 KW @ 78.2RPM
MAX CRITICAL RANGE	42-50 RPM
AUX. BOILER	Miura, 1x HB-20000kg/h
GENERATOR (3 sets)	YANMAR 6EY22ALWS, 1180KWx900rpm
EMER D.G.	CUMMINS, 6CT8.3-D(M), 188KW
PROPELLER	4 Blade FPP, Dia 7100mm
RUDDER	Semi-Spade, 35°
STEERING GEAR	Rotary Vane, RV 1050-3
FW GENERATOR CAP	ALFA LAVAL, 15Ts/Day
BOW THRUSTER	N.A

BUNKER TANKS	
1 FOT (P)	317.90 m3
1 FOT (S)	292.80 m3
2 FOT	619.50 m3
2 FO (S)in	
2FO(S)out	
FO SETT	34.00 m3
FO SER	34.00 m3
LSFO sett	
LSFO Serv	
FO OFLOW	
<b>TOTAL</b>	<b>1298.20 m3</b>
MGO	449.30 m3
MOG Srv 1	18.20 m3
MOG Srv 2	18.20 m3
<b>TOTAL</b>	<b>485.70 m3</b>

WINCHES / WINDLASS / ROPES / EMERGENCY TOWING			
	FWD	AFT	PARTICULARS
WINCHES	6 (d.drm)	6 (d.drm)	
ROPE	6	6	200m
Winch BHC	6	6	55.0mt
WINDLASS	2	NIL	
FIRE WIRE	1	1	Owner supply
ANCHOR	2	0	Stbd 12 shackles / Port 11 shackles
EMG. TOWING	YES	YES	Anchor chain: 73 mm
	1	1	

CARGO AND BALLAST PUMPING SYSTEM				
MAIN PUMPS	NO.	CAPACITY	HEAD	RPM
CARGO Framo	14	600m3/hr	120mlc	
CARGO Framo	2	300m3/hr	120mlc	
BALLAST Framo	2	700m3/hr	35mlc	
TANK CLNG Framo	1	160m3/hr	110 mlc	

MANIFOLD ARRANGEMENT	
Distance of cargo manifold to cargo manifold	2010mm
Distance of cargo manifold to vpr. return manifold	4020mm
Distance of top of rail to centre of manifold	895mm
Distance of manifold to ship side	4600 mm
Distance of manifold from keel	20.4 m

CARGO HOSE CRANES	
1 Set x 10 Ts	

LIFE BOATS	
1x 25 Persons	
Type:	FRP
TOTALLY ENCLOSED TYPE	

FIRE FIGHTING SYSTEM	
E/RM	CO2, HYPER MIST
PUMP ROOM	CO2
CARGO/DK AREA	LOW EXPANSION FOAM

IG / VAPOR EMISSION / VENTING	
IG BLOWER CAPACITY	4500 cum/Hr.
P/V VALVE PR./ VAC. SETTING	2200/ -350mmwg

Min Bow Drft:	6.465m
Blst Drft:	F6.50m, A 8.28 m
MARPOL Trim:	1.53 m
Propeller Immer.:	7.10m